



7605 Presidents Drive  
Orlando, Florida USA 32809  
TEL: 407-812-4611 FAX: 407-850-2422  
[www.leelaser.com](http://www.leelaser.com)

## PRESS RELEASE

February 9, 2012

### High Power 532nm Square Beam Delivery

**Up to 60-Watts of usable power to the work piece is now available.**

Lee Laser announces the ability to deliver high quality square, "Top Hat" beam profiles for industrial, scientific, and medical applications utilizing its LDP Series of Green lasers @ 532nm.

Demonstrated processing speeds of 6m / second utilizing 100µm X 100µm square fibers give Lee Laser customers increased throughput and reduced scrap due to high quality 532nm beam profiles now available.

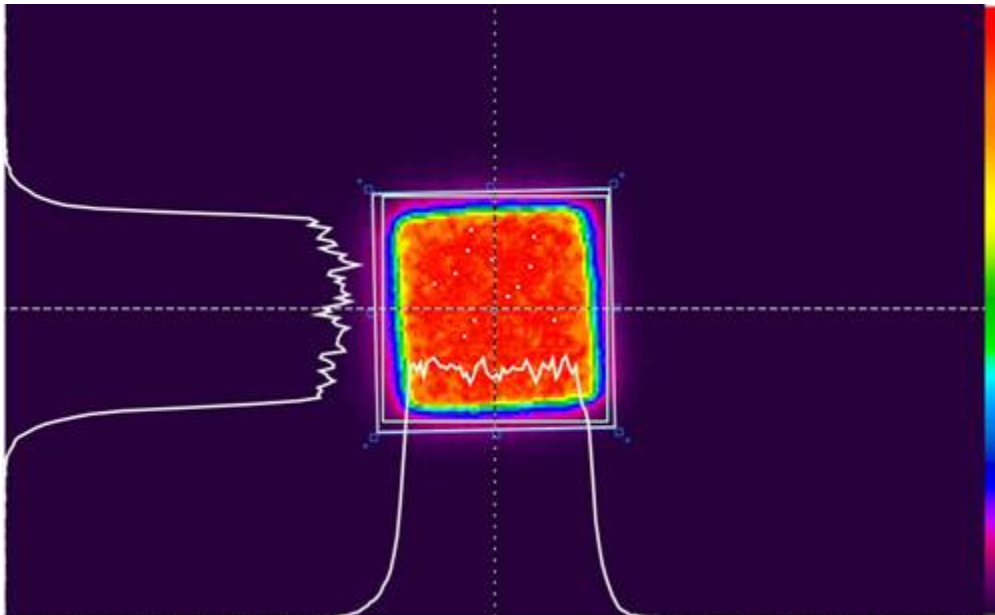
From Lee Laser; OEM's can now buy a complete Integration Kit, pre-aligned and programmed for a wide range of square beam profile applications.

#### **About Lee Laser:**

Since 1984, Lee Laser has been known as a global OEM manufacturer of CW and Q-Switched Nd:YAG Lasers. Key sectors served are Industrial, Medical, and Scientific integrators utilizing Lee's 1064, 532nm, and 355nm laser products.

**Accompanying Photo:** Square Beam Profile Taken @ 31W, 25 kHz..

For more information, contact Joe A. Kennedy, Director, Sales & Marketing



**Beam Profile:** Square

**Image Dimensions:** 280 $\mu$ m X 280 $\mu$ m

**Frequency:** 25 kHz

**Power:** 40W (At Work-Piece)